



Cypress

DEVELOPMENT CORP.

Diversified Precious and Base Metal Explorer

Developing 2 Projects in Red Lake, Ontario and 4 Projects in Nevada

March 2006



Cypress Development Corp.



Capital Structure



Trading Symbol:

CYP



Stock Exchange:

TSX VENTURE



Total Outstanding:

57.9 million



Fully Diluted:

71.8 million



Working Capital:

\$1,250,000



Debt:

Nil



Recent Price:

\$0.25

Cypress Development's Key Management



Don C. Huston: President, Director

Has been associated with the mineral exploration industry for 25 years and has extensive experience as a financier and in-field manager of numerous mineral exploration projects in North America. He was born and raised in Red Lake, Ontario and spent 15 years as a geophysical contractor with C.D. Huston & Sons Ltd. as mineral exploration consultants in northern Ontario, Manitoba, and Saskatchewan.



Dave Busch, B.A., B.Sc., P.Geo.: Vice President Exploration

Has over 30 years experience exploring northwest Ontario's gold belts, Mr. Busch is considered one of Canada's foremost authorities on the geology and exploration of Archean lode gold deposits, particularly the Red Lake & Birch-Uchi greenstone belts.



Robert D. Marvin, B.Sc.,: Nevada Exploration Manager

He has been a Geoscientist since 1984 and manages Cypress' Scorpion, Awake, Verde, and Gunman Projects in Nevada.

Well Diversified Junior Explorer



Diverse portfolio of mineral projects gives Cypress broad exposure to higher commodity prices.



Cypress Development's exposure to a broad range of commodities should provide investors with considerable market leverage as the economic recovery progresses.



Cypress Development has 2 gold projects in one of the most active gold exploration regions in Canada, the Red Lake Mining District of Northwestern, Ontario.

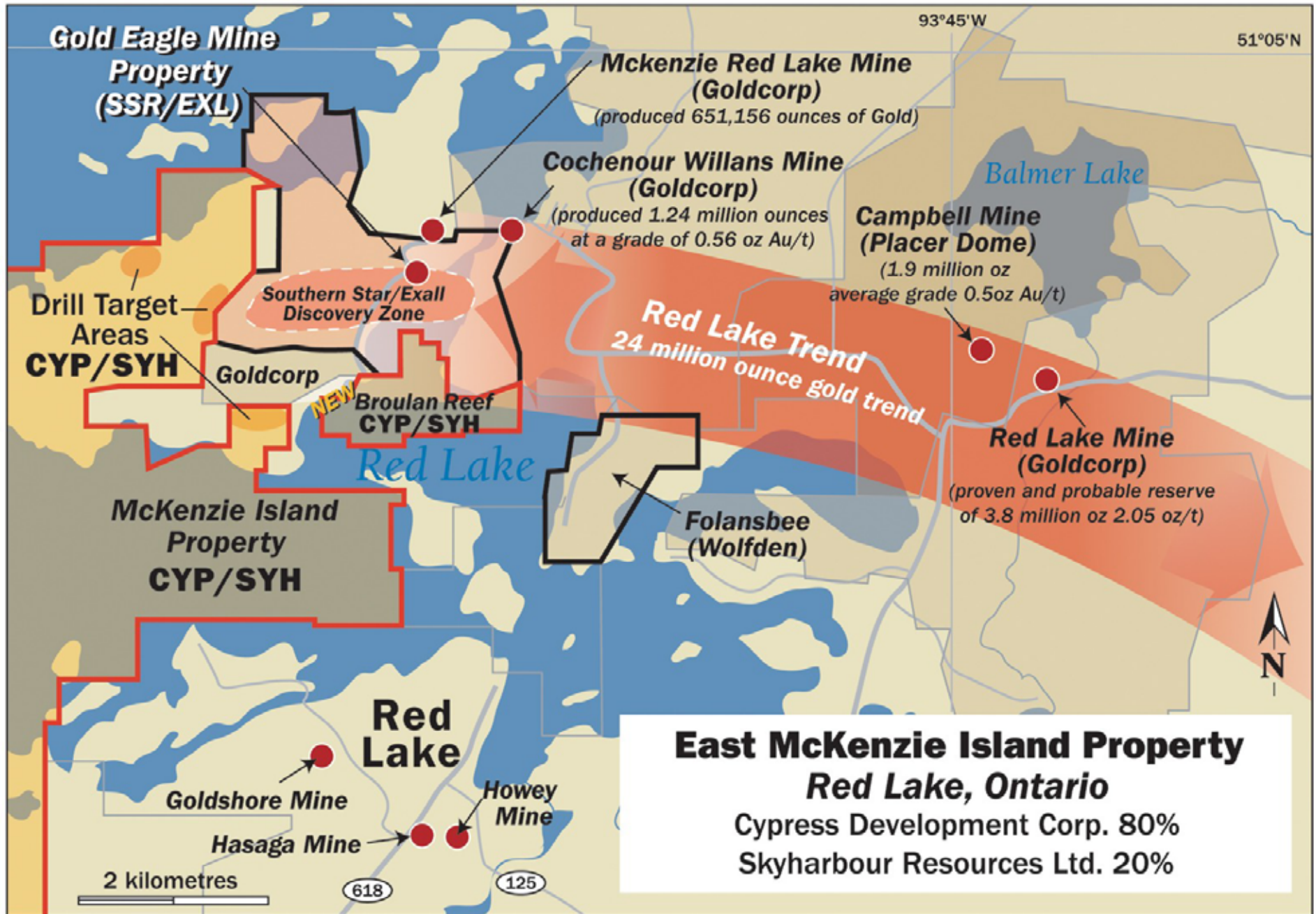


Cypress Development is developing 2 gold projects, a silver/copper project, and a high-grade zinc project in State of Nevada, USA.



The Company also holds an interest in 1,000 square kilometres of properties south of Inco's Voisey's Bay Nickel Mine in Labrador, Canada.

East McKenzie Island & Broulan Reef Projects, Red Lake, Ontario

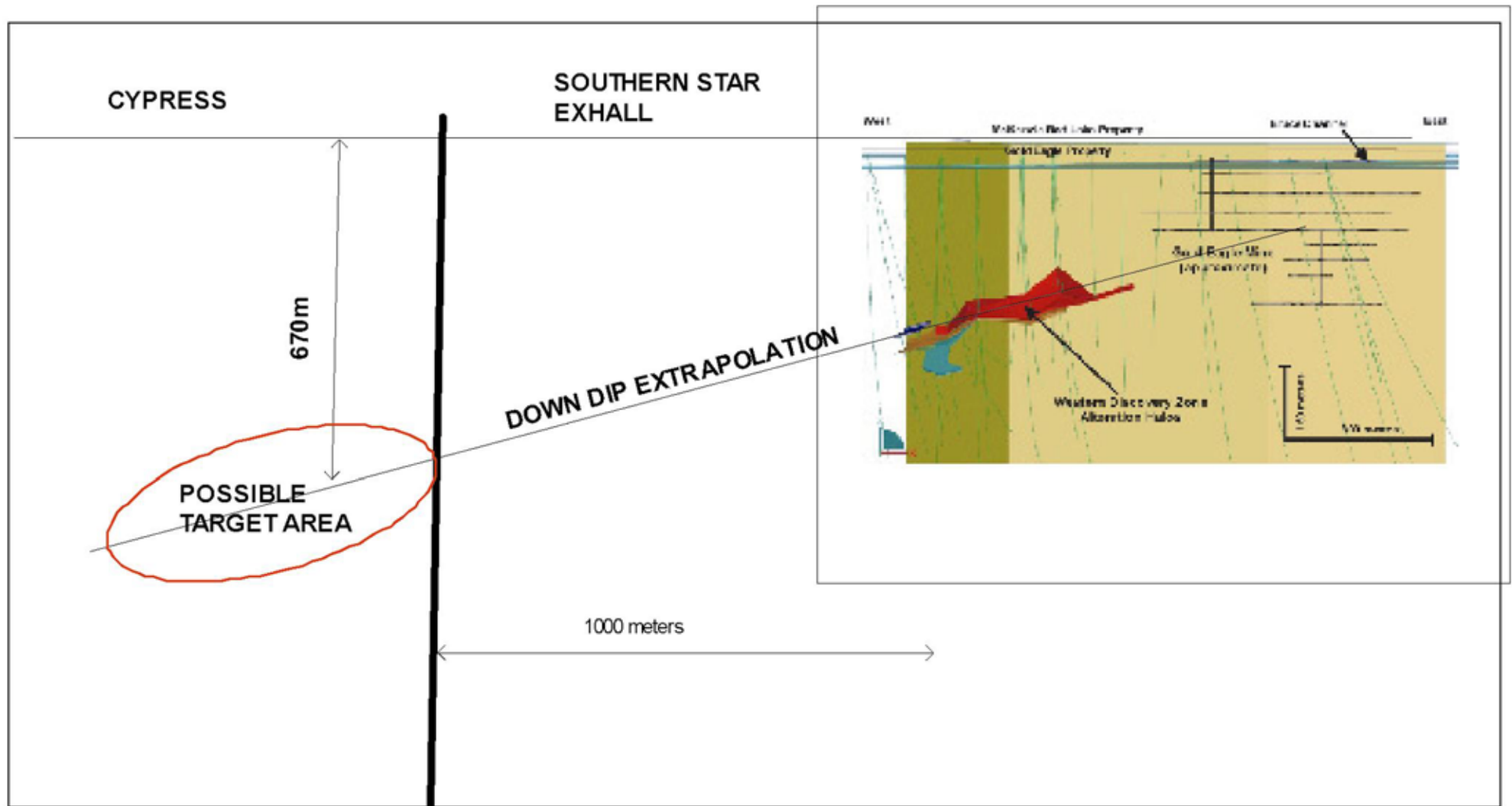


McKenzie Island & Broulan Reef Projects

Cypress Development Corp. owns an 80% interest in the 5,400 acres McKenzie Island & Broulan Reef properties in the Red Lake greenstone belt.

- The McKenzie Island & Broulan Reef properties are located west, south, and adjacent to **Southern Star Resources** / **Exall Resources** Gold Eagle property, where a major drill program is currently underway. In August 2005 they announced 28.47 grams per ton over 11.70 metres.
- Cypress of the opinion that the western extension of the discovery on the Gold Eagle property extends onto McKenzie Island property.
- The projects are on strike with **Placer Dome's** and **Goldcorp's** producing gold mines 7 km to the east.
- 14 reconnaissance holes (approx. 3,300 metres) were drilled on the southern tip of the McKenzie Island property during Feb. to April 2005.
- Significant zones of gold mineralization were discovered with sample results showing numerous multi-gram intercepts with a high value of 23.8 grams gold over .2 metres.
- First drill program adjacent to Southern Star / Exall Resources Gold Eagle property planned for 2005 / 2006 winter drill season.

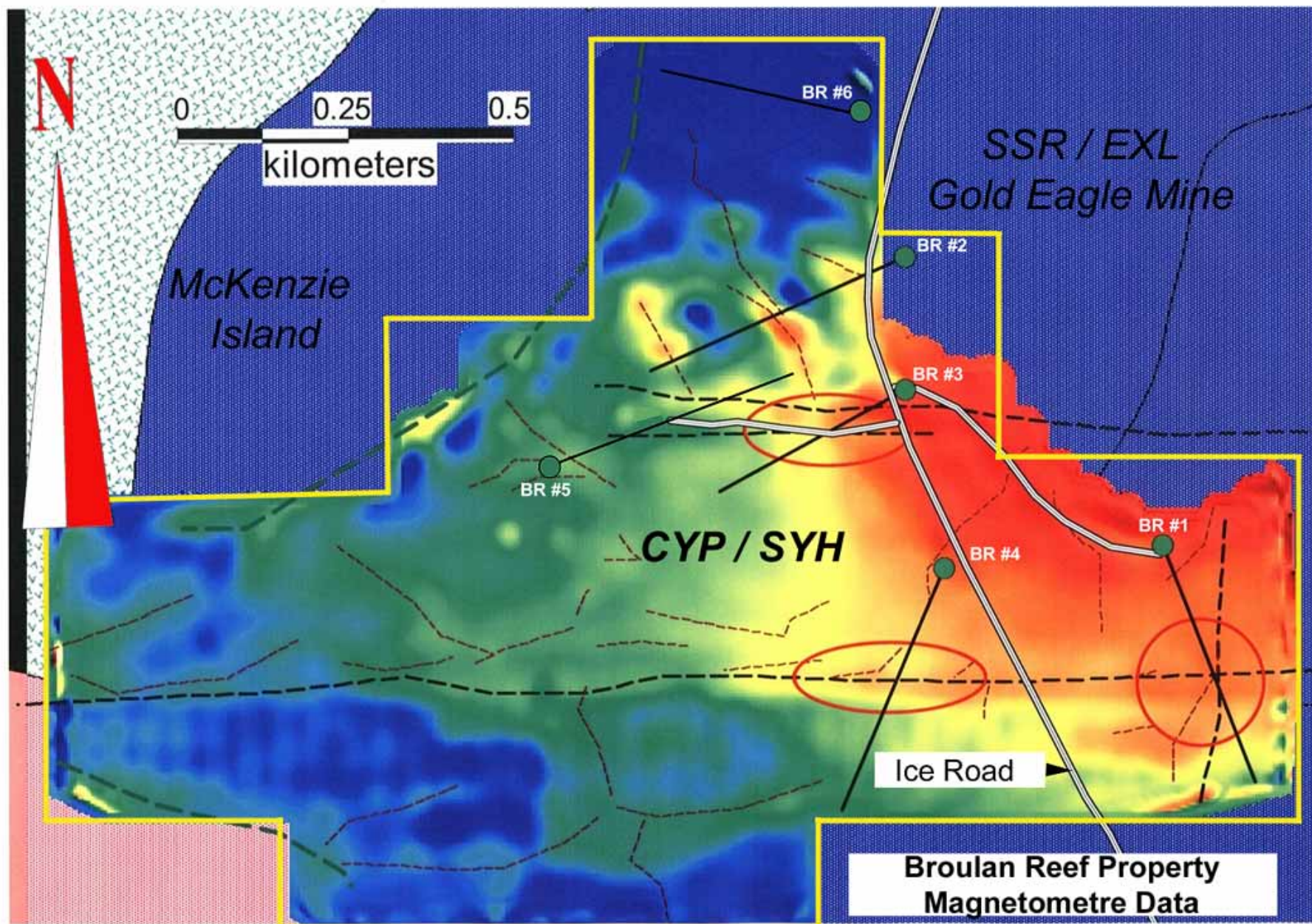
Extrapolation of SSR / EXL Western Discovery onto McKenzie Island Project



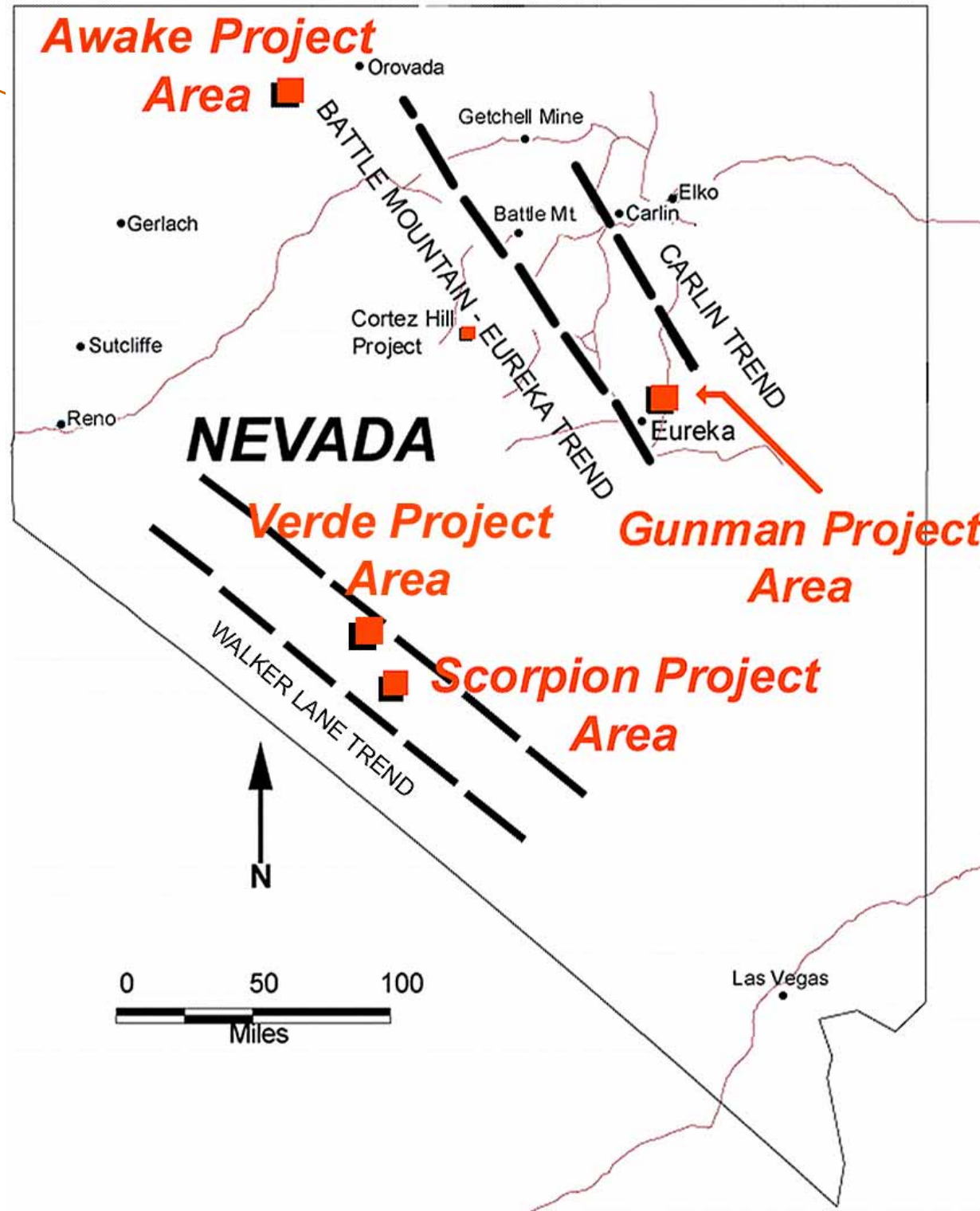
Extrapolation of Southern Star / Exall Resources Zone onto Cypress / Skyharbour McKenzie Island Property with a possible target depth of 670 +/-

Broulan Reef Project

2006 Phase I Winter Drill Program



Location of Cypress 4 Projects in Nevada, USA



Verde Silver/Copper Project

- **Cypress Development Corp.** has acquired 100% interest in the Verde property which is centred on a structurally controlled, strongly mineralized, silver-rich polymetallic showing on BLM lands in the central Walker Lane region, Mineral County, Nevada.
- The Verde property lies within the widely mineralized Walker Lane structural belt. The region is noted for bonanza grade, volcanic hosted precious metal deposits.
- Bonanza grade silver assays up to 6710 ppm (195 oz/ton silver) have been received from the Verde property. The silver values are accompanied by multi-percent copper (5.12% Cu), and gram-level gold.
- The metal signature of the Verde property is similar to precious metal rich skarn and replacement ore deposits worldwide.
- Target definition work has begun.

Assay Results from Sampling Program on Verde Project, Nevada

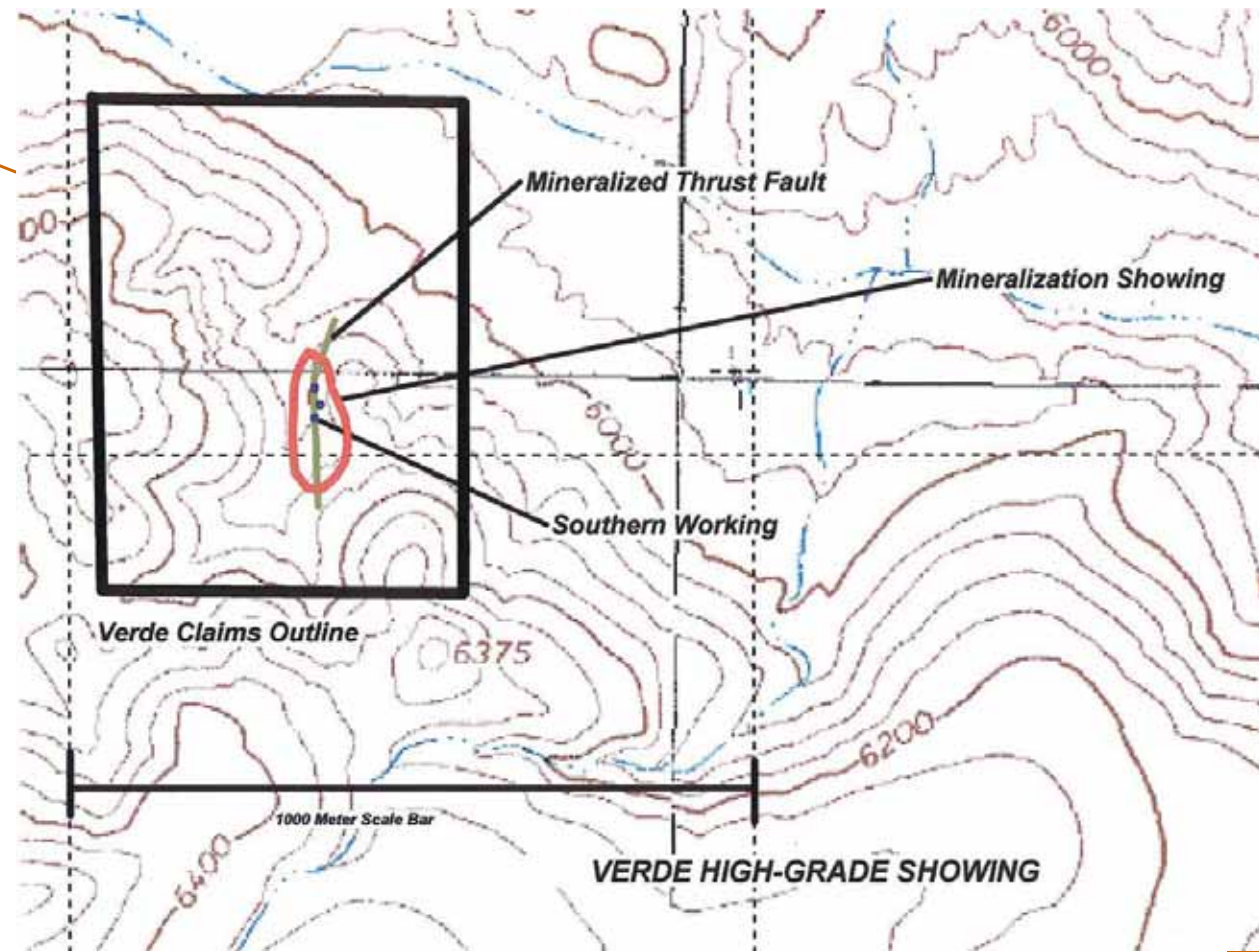


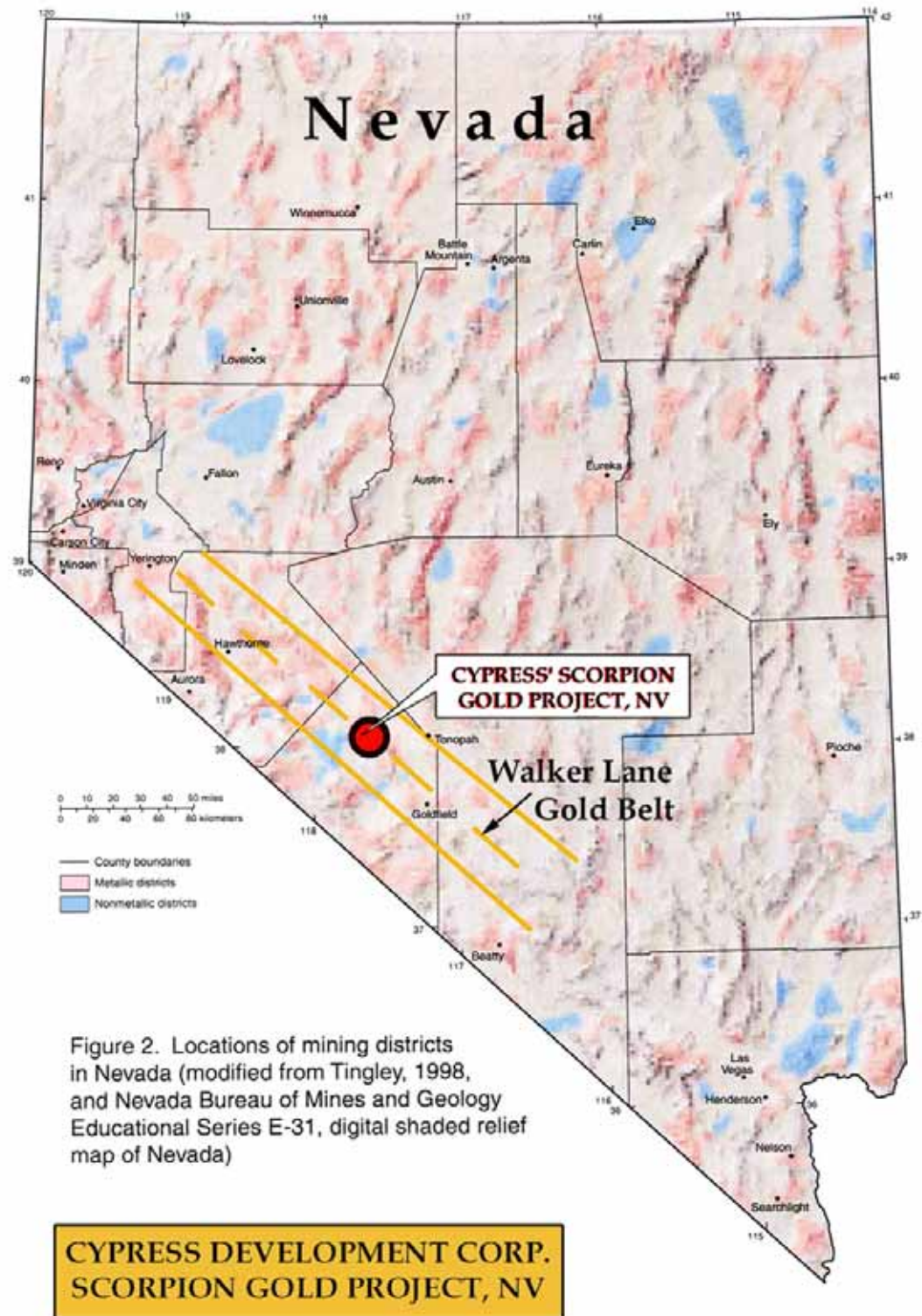
Table 1

Verde Property Surface Sample Results, November 15 2005

CLIENT : "CYPDEV - Cypress Development Corp."

Sample Number	Sample Location	Au ppm	As ppm	Bi ppm	Hg ppm	Pb ppm	Sb ppm	Ag oz / ton	Ag ppm	Cu %
VDR-001	northern working	1.23	612	149	5	1740	3890	47	1640	3.96
VDR-006	northern working	2.93	306	368	13	>10000	>10000	57	1955	5.12
VDR-007	northern working	0.947	342	104	115	2350	5540	112	3840	3.23
VDR-008	southern working	0.151	401	121	135	2050	8020	195	6710	4.23
VDR-009	northern working	1.125	339	128	8	7930	7580	74	2530	3.13

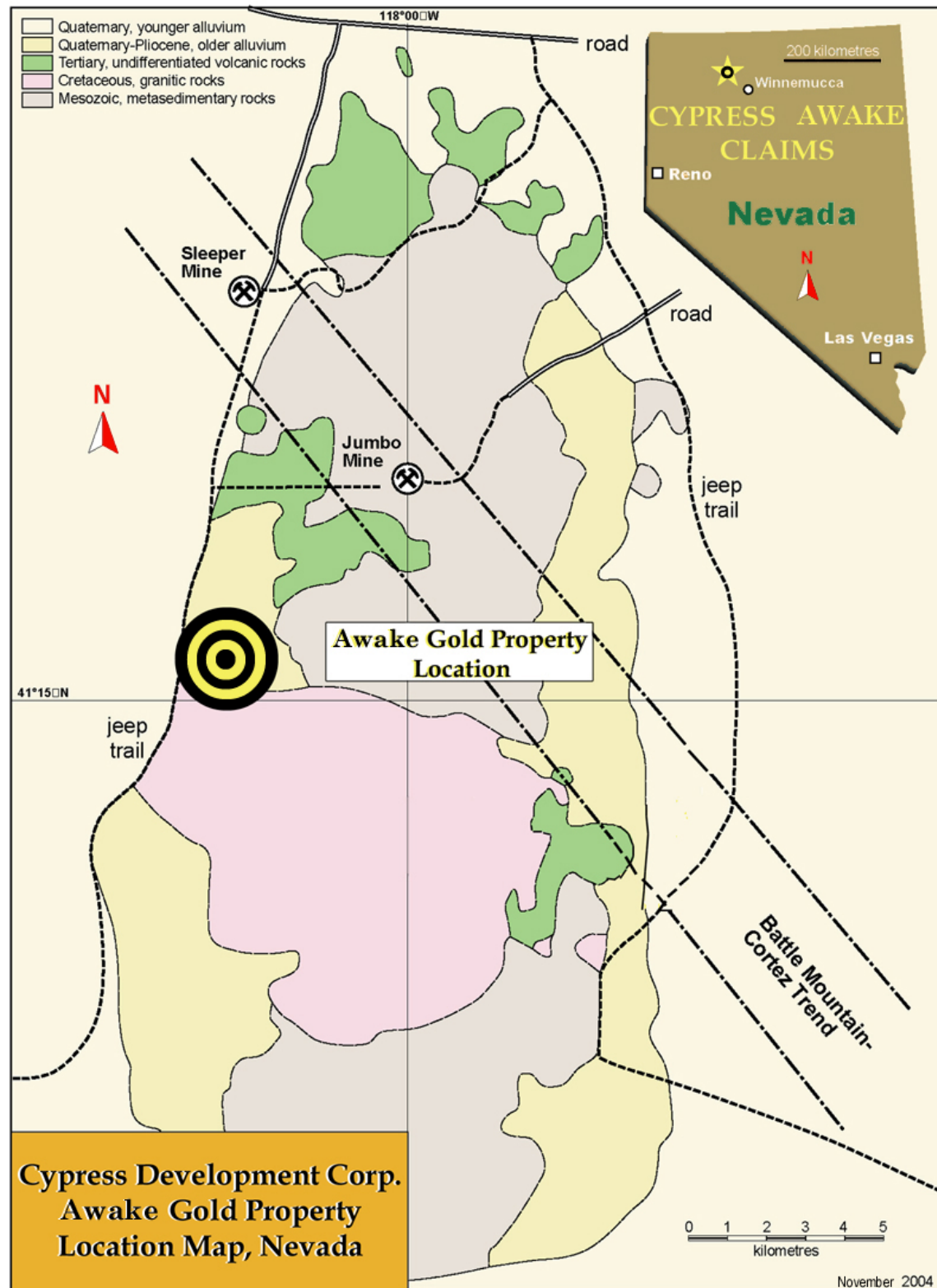
Scorpion Gold Project, Nevada, USA



Scorpion Gold Project

- **Cypress Development Corp.** has acquired a 100% interest in 26 federal gold lode mining claims in central Mineral County, Nevada.
- The Scorpion property lies within the widely mineralized Walker Lane structural zone.
- The region is noted for its bonanza grade, volcanic hosted precious metal deposits such as the Comstock, Paradise Peak, Goldfield, Aurora, and the Borealis.
- Active exploration along an east-west trending structural zone that contains the newly staked Scorpion claims block is ongoing by **Newmont Mining Corp.** at their Whiskey Flat project and by Golden Phoenix Minerals at the Borealis Mine area.
- The exposed and indicated geology at the Scorpion property is consistent with that of the Borealis district, with six distinct gold ore bodies having been discovered and mined here.
- The size and intensity of the alteration system exhibited on the Scorpion property compares favorably with that at Borealis.

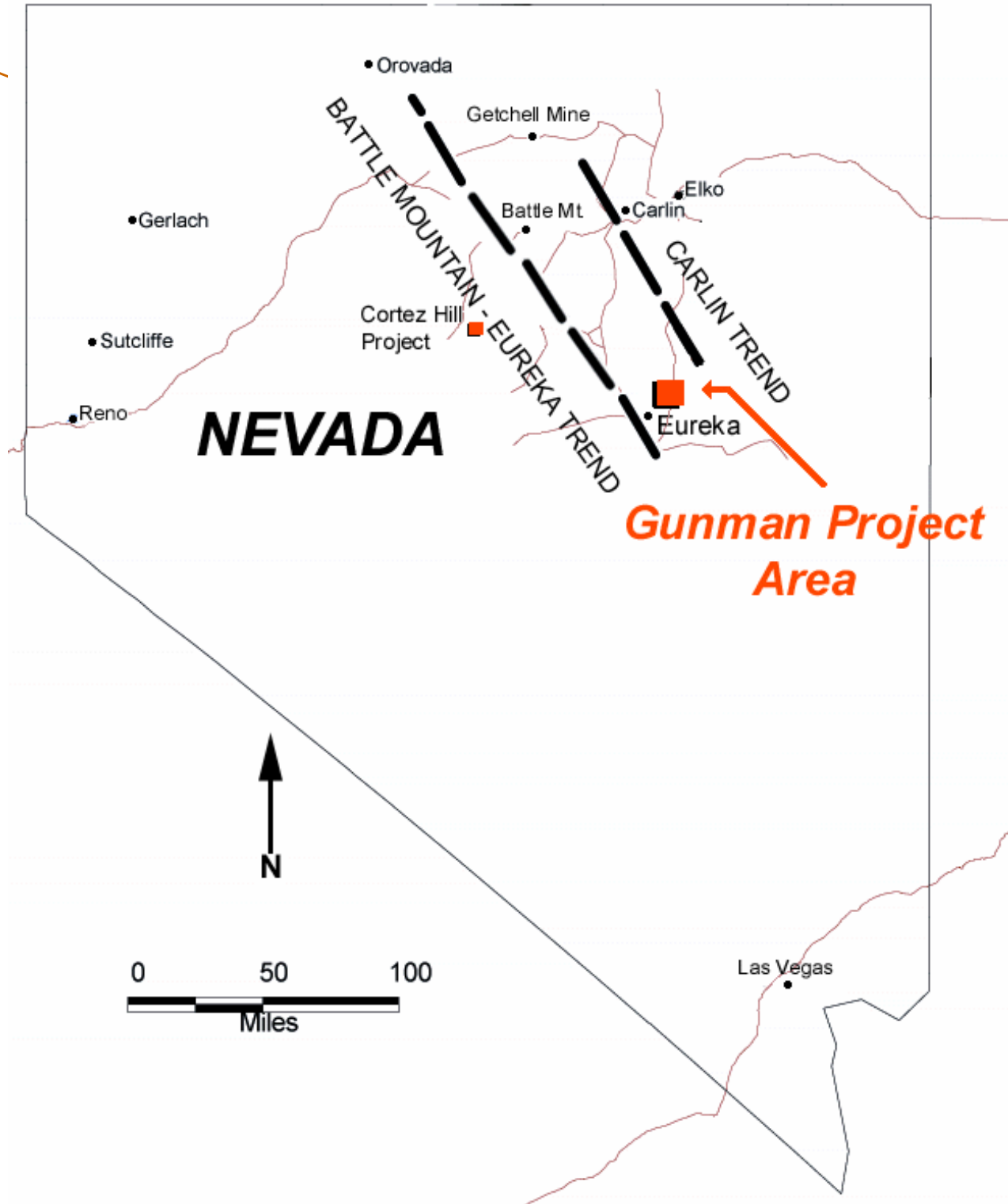
Awake Gold Project, Nevada, USA



Awake Gold Project

- **Cypress Development Corp.** has acquired a 100% interest in 54 mineral lode claims located in the Slumbering Hills area of Humboldt County, northern Nevada.
- The Awake gold property is situated approximately 5 miles to the south of the Sleeper Mine, which is a well documented prolific past gold producer at the northern extension of the Battle Mountain - Cortez Geological Trend.
- The volcanic bedrock in the area consists of a layered sequence of Tertiary volcanic rocks, primarily ash flow tuffs, with minor basalts and rhyolites. The geologic structure is comprised of three major groups of faults and fracturing in the project area. They include the steeply dipping range front faults that are associated with extensively brecciated zones, the dominant northwestern trending faults that are known to offset gold mineralized veins.

Gunman Zinc Project, Nevada, USA



Gunman Zinc Project

- **Cypress Development Corp.** owns a 73.1% interest in the 2,400 acres Gunman Zinc-Silver Project located in White Pine County, northeast of Eureka, Nevada.
- The Company completed 17,400 feet of drilling in 2000 which discovered the RH Zone **where grades in excess of 25% zinc and 8 oz/ton silver were recovered over significant widths.**
- The high-grades of zinc-silver mineralization encountered provides Cypress with the incentive to continue detailed exploration of the Gunman Project.
- The mineralization is carbonate replacement type and is almost exclusively zinc oxide. Strong potential exists to identify several medium tonnage deposits that could one day constitute an intermediate sized, high-grade zinc mining operation.



Goals For 2006



Complete Phase I Drill Program on East McKenzie Island gold project located east and adjacent to Southern Star / Exall Resources Gold Eagle property.



Complete Phase I Drill Program on new Broulan Reef gold project located south and adjacent to Southern Star / Exall Resources Gold Eagle property.



Complete deep drill program on Cypress' high-grade Gunman zinc project in eastern Nevada.



Complete Phase I Drill program on Cypress' Scorpion gold project in western Nevada.



Complete Phase I Drill program on Cypress' Awake gold project in northern Nevada.



Cypress

DEVELOPMENT CORP.



Contact: Don C. Huston – President

Telephone: (604) 687-3376

Toll Free: 800-567-8181

<http://www.cypressdevelopmentcorp.com>

<mailto:info@cypressdevelopmentcorp.com>

Suite 1490, 885 West Georgia Street, Vancouver, BC, V6C 3E8, CANADA